

Troubleshooting Photography Issues

for Publications





K. Clark, India

Today's Agenda

5 Challenge Areas

1. Exposure
2. Composition for story
3. Outside Light
4. Inside Light
5. Timing

Question & Answer

CHALLENGE 1: EXPOSURE



Under Exposed
Not enough light
Shadows go black



A Good Exposure
balances the light
and dark areas



K. Clark, Niger W. Africa

Over Exposed
Too much light
Blown out areas

EXPOSURE — Smart Phones



ISSUE: Your focus/exposure point is in the middle of the screen, but what if you want to focus/exposure off to the side?

1. Set the focus/exposure point by touching an area & holding it down on the screen.
2. Slide the icon to adjust the exposure

Some apps will let you set ISO & shutter speed.

Limitations: Low light & action

EXPOSURE - Automatic



The camera meter likes 17% gray

ISSUE: Extremes in “all light” (snow) or “all dark” (nighttime) shots can look gray.

Solution: Over or under-expose slightly on purpose for a brighter or darker image. (*exposure compensation meter +1, +2 or -1, -2*)

At any given time, there are six or more correct exposures.

ISSUE: Your camera reads light but does not know action level or creative choices.

Consider using the Image Zone (situational icons) settings.

EXPOSURE – Manual - ISO

ISO - sensor sensitivity, corresponds to light levels, a lower number is best.

ISO 100-200 for optimal light

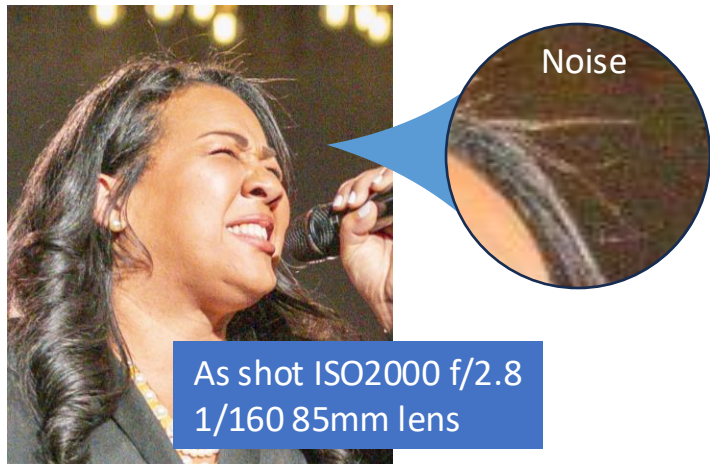
ISO 400-800 for overcast situations

ISO 1600+ for low-light, auditorium

ISSUE: Noise/grain

Not wrong in low-light situations for smaller images but not desirable for large images such as your cover.

AI “Denoise” in Lightroom can help.



EXPOSURE – Manual – Shutter Speed

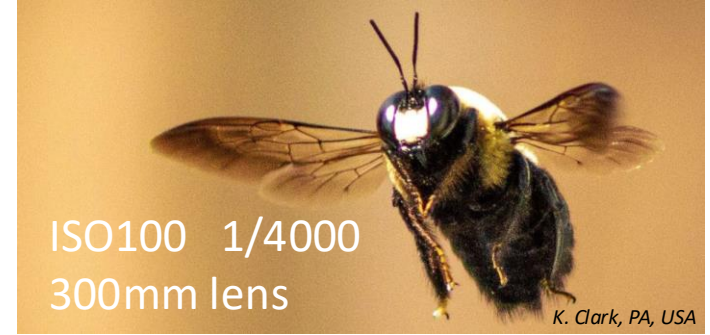
Shutter speed – time value sensor is exposed

ISSUE: Slow Shutter Speeds = motion blur

- under 1/60 you need to stabilize the camera with a tripod/flat surface
- 1/125 – 1/250 med action
- 1/500 running
- 1/1000 throwing

For long lenses use 1/lens length

EX: 300mm = 1/300

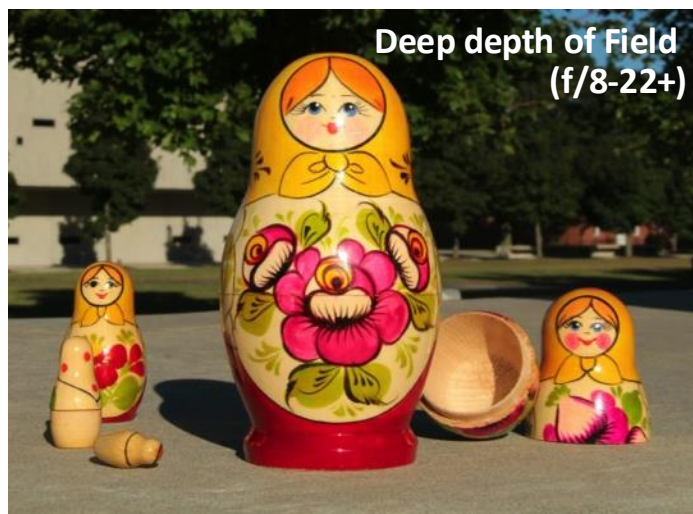


EXPOSURE – Manual – Aperture

Aperture – lens opening

Controls the depth of field
(area in focus)

ISSUES not enough area is in focus
or too much



CHALLENGE 2: Composition for story

Change Your Position

ISSUE: All your shots are from the same spot

Vary Your Position: Move around your subject to find the most flattering and interesting perspective.

Layer your images and show context.



Visual Variety



ISSUE: All your shots are from the same distance. Shoot wide, medium and close



K. Clark, Norristown, PA, USA



Check the composition around your subject

ISSUE: Background Distractions

Always be mindful of what's in the background and how it interacts with your subject.

1. Always take a second look
2. Wait until the interference moves on
3. Lean one way or another
4. Change your spot



CHALLENGE 3: Outside Light

Use Fill Flash

ISSUE: Backlight or harsh noon-time sun

Solution 1: Fill-flash – underexpose by two stops



Diffuse the Light

ISSUE: Harsh noon-time sun

Solution 2: Use a cloth to diffuse the light



White cloth diffuser



Without a diffuser

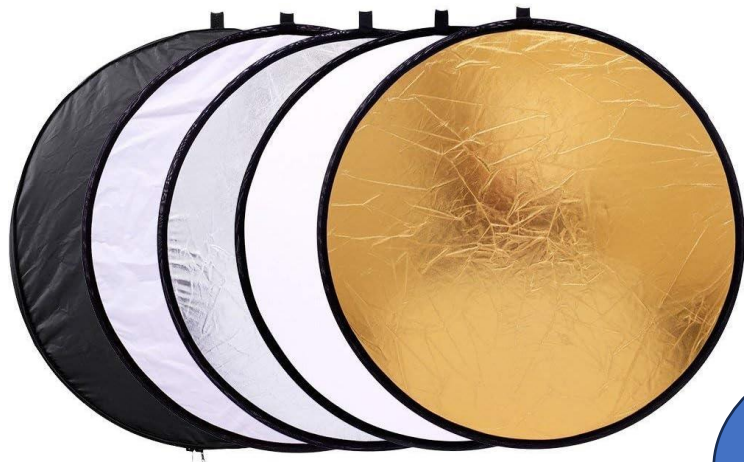


With a diffuser

Reflect the Light

ISSUE: Backlight or harsh noon-time sun

Solution 3: Reflect the light



Sunlight from window here

Gold reflector here

Outdoor Stage lights



2019 K. Clark, UpRise



ISSUES: Timing & Color

Beware the light can blowout your exposure

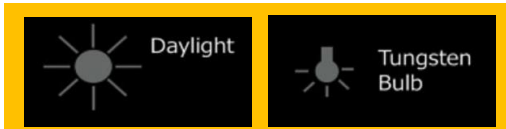
Wait & watch the lighting configurations

CHALLENGE 4: Indoor Light

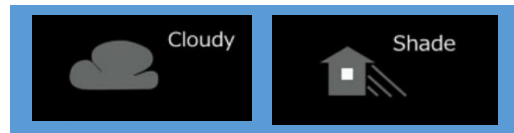
Color Casts

ISSUE: Image is too yellow or too blue

Solution: Correct the White balance in camera or in editing.



Adds blue



Adds yellow



Adds magenta



Stage lights

ISSUE: 1. bright, 2. positioning, 3. color

Solution: 1. expose for skin tones (underexpose)
2. Work your angles and distance

Rim Light: get close & low so the light is behind the subject's head.

3. Color: be patient,
Use a color that
looks natural



K. Clark, MLK Program

A



B



K. Clark, Victory

Projector & LED Screens

ISSUE: Screen distortions - unusual colors or lines

Solution: Keep the shutter speed under 1/160 when possible.



Crowd shots

Issue: the house lights are off or very low



1. Use the stage lights on the front row
2. Use a fast lens – the wide-open aperture (f/1.8 etc..) allows you to use a lower ISO and cuts down on noise.
3. Isolate the one
 - Look for contrasts

CHALLENGE 5: Timing

ISSUE: Missing the moments

The speaker is looking down or away, no expressions or action

Solution: observe, wait, anticipate

Pre-compose your shots and wait, follow the rhythm of the speaker or game.

Use burst modes, back-button focus

Pray, be patient, move around

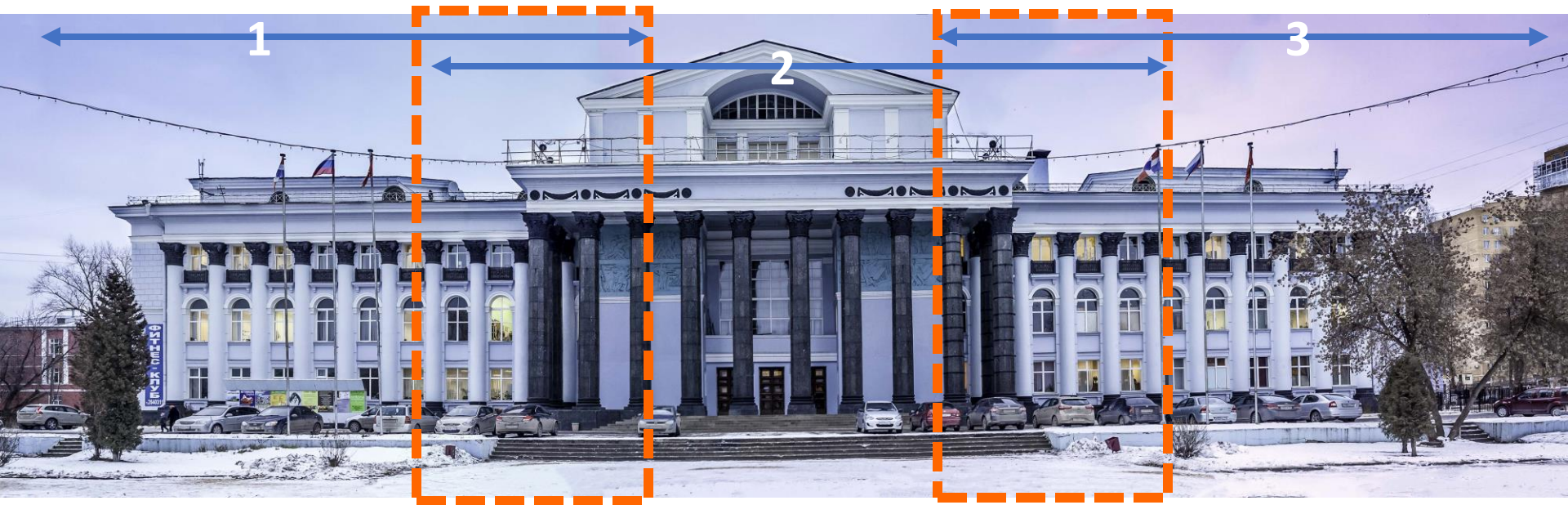


K. Clark, St. Petersburg, Russia



Extra

ISSUE: the shot is too wide for your lens. **SOLUTION:** Panorama 3+ shots



K. Clark, New Testament Church, Perm, Russia

Overlapping areas, stitch together Photoshop or Lightroom

Live Q&A

- Q. Think about a photo you've taken that didn't turn out how you expected. How can we help?
- Q. Is there any type of photo or scenario that you feel stuck?
- Q. Share **one tip or technique** that has helped you improve your photography.

